

# DC GAUSSMETERS

## MAGNAPROBE

*View Polarity & Orientation*

Great way to visualize the 3-D nature of a DC magnetic field. MagnaProbe is a small magnet suspended in a gimbal mounting. The magnet's North pole is colored red, South is blue, to easily indicate polarity. Can be used to show:

- forces between magnetic poles
- induced magnetism
- the shapes of magnetic fields between like and unlike poles
- mapping and direction of a field around a bar magnet, a wire or a coil
- properties of a field produced by an electric current.

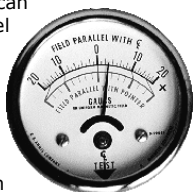


This is a very important tool for mapping the direction of field lines prior to shielding design (speaker shielding for example), and is a great teaching tool. **(Cat. #Q420) ..... \$14.95**

## POCKET MAGNETOMETER

*Industrial Magnetic Strength Meter*

DC magnetic fields can develop in many steel or iron objects if they have been exposed to magnetic fields, current, or friction. Even structural members in barns can become magnetized due to stray voltage. This hand-held device detects residual magnetism in steel parts quickly and accurately. Place it near or against the object being tested, and the needle gauge reads magnitude and polarity of the magnetism in the object at that site. Will also verify thoroughness of de-magnetizing. Check your car, bed frame, desk furniture or any other metal objects you spend time with, even check the strength of magnets. Choice of Range:  $\pm 20$  or  $\pm 100$  Gauss.



*Other ranges available by special order.*

**20-0-20 G (Cat. #Q142-20) .... \$65.95**  
**100-0-100 G (Cat. #Q142-100) \$165.00**

## GEO-MAGNETOMETER

*Our Most Sensitive DC Gaussmeter*

You just will not find anything this sensitive in this price range! Measure Earth's magnetic field with great precision or detect magnets from a distance, find breaks in magnetized steel cables, too!

Only 3" x 4" x 7", uses two 9V batteries for total portability & convenience. AC adapter included for bench top use. An axial (High Sensitivity Hall Generator) probe with 3' cable is included providing nearly linear response from DC to 10



Hz. In our tests, the sensitivity was useful up to 60 Hz and beyond. Interested in .01 Hz? 2 Hz? 7.8 Hz? No problem! You can analyze fluctuations in the Earth's magnetic field, fields from audio recordings, and almost any other ultra-low frequency magnetic field source. 200mV AC recorder output included to interface this unit with your scope or analyzer (see page 81). Large 3½ digit bipolar display. 4 ranges: 0-2, 20, 200, 2000 mG (yes *milliGauss!*) and a 5% error guarantee. 2 year parts and labor warrantee.

**(Cat. #Q3100) ..... \$750.00**

### Connector Cable

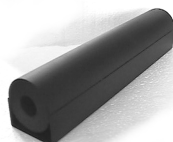


Perfect for connecting the output on this meter to a DMM with PC Interface for data

logging and graphics. 3.5mm mono audio plug on one end, dual banana plug on other. **(Cat. #Q128-3.5) ..... \$14.95**

## ZERO-GAUSS CHAMBER ACCESSORY

Double shielded Mumetal™ chamber that you place Hall effect probes into to shield Earth's magnetic field. Allows precise zeroing of GeoMagnetometer. 1" ID. **(Cat. #Q3105) ..... \$395.00**



Toll free in USA: 1-888-537-7363  
 International: +1-518-608-6479

Fax: 1-309-422-4355  
 www.lessemf.com