

# AC GAUSSMETERS- 3 AXIS

## XYZ AXIS EMF TESTER WITH REMOTE PROBE

Check Each Axis Individually

This EMF tester is designed to provide user a quick, reliable and easy way to measure magnetic field levels around power lines, electrical appliances, wiring and industrial devices.

- Wide measuring ranges
- One button scrolls through - X, Y, and Z axis readings
- Big digit LCD display
- Data hold button
- Covers bandwidths: **30 to 300 Hz**
- Simple to operate
- Uses 1 9V battery
- Probe, fits hard-to-reach spaces
- 1 year warranty.



Complete with 3ft sensor cable, and hard carrying case.

Unit	Range	Resolut'n	Accuracy
μTesla	20	0.01	±(4% + 3d)
	200	0.1	±(5% + 3d)
	2000	1	±(10% + 5d)

Unit	Range	Resolut'n	Accuracy
mGauss	200	0.1	±(4% + 3d)
	2000	1	±(5% + 3d)
	20,000	10	±(10% + 5d)

**XYZ Axis EMF Tester (Cat. #Q194) ..... \$149.95**

## DATALOGGING 3-AXIS GAUSSMETER WITH PC INTERFACE

Magnetic Field Dosimeter

Need to record magnetic field readings? This meter displays 3-axis microTesla or milliGauss readout with date/time; offers Data Hold & MAX/MIN Hold functions. Extremely sensitive with range all the way up to 1999 mG. Want more? Toggle between 3-axis sum or show each X,Y,Z value. 9999 reading datalog storage capacity with time/date stamp for field use and USB interface, Windows 98/2000/XP/7 software and cable included for datalogging that is limited only by your computer's memory. Large, easy to see display and rugged meter body. Uses one 9V battery. Great price too!

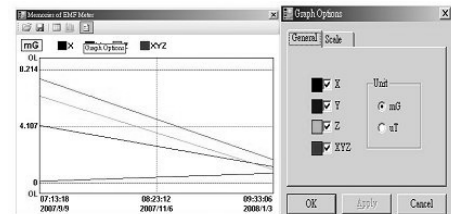
**Datalogging 3-Axis Gaussmeter (Cat. #Q494) ..... \$199.95**



Date	Time	X	Y	Z	XYZ	Unit
2007/09/10	11:11	0.12	0.24	0.36	0.52	mG
2007/09/10	11:12	1.18	0.12	0.88	0.95	mG
2007/09/10	11:14	1.48	0.11	0.91	1.50	mG
2007/09/10	11:15	1.48	0.11	0.91	1.50	mG
2007/09/10	11:16	1.48	0.11	0.91	1.50	mG
2007/09/10	11:17	1.48	0.11	0.91	1.50	mG
2007/09/10	11:18	1.48	0.11	0.91	1.50	mG
2007/09/10	11:19	1.48	0.11	0.91	1.50	mG
2007/09/10	11:20	1.48	0.11	0.91	1.50	mG
2007/09/10	11:21	1.48	0.11	0.91	1.50	mG
2007/09/10	11:22	1.48	0.11	0.91	1.50	mG
2007/09/10	11:23	1.48	0.11	0.91	1.50	mG
2007/09/10	11:24	1.48	0.11	0.91	1.50	mG
2007/09/10	11:25	1.48	0.11	0.91	1.50	mG
2007/09/10	11:26	1.48	0.11	0.91	1.50	mG
2007/09/10	11:27	1.48	0.11	0.91	1.50	mG
2007/09/10	11:28	1.48	0.11	0.91	1.50	mG
2007/09/10	11:29	1.48	0.11	0.91	1.50	mG
2007/09/10	11:30	1.48	0.11	0.91	1.50	mG

X(mG)	Y(mG)	Z(mG)
0.56	0.01	0.44
Min. (mG)	XYZ(mG)	Max. (mG)
0.50	0.71	6.70

Screenshots



Display	4 digits. Max. indication 1999
Auto Range	20/2000 milli Gauss 2/20/200 micro Tesla
Resolution	0.01/1 milli Gauss 0.001/0.01/0.1 microT
Number of Axis	Three axis
Band Width	30 Hz to 2000 Hz
Accuracy	±(3%+30d) at 50/60Hz at 20 mG; ±1mG below 2 mG
Datalogger storage	9999 manual readings;
Sampling Time	2.5 per second
Accessories Included	Operation Manual, 9V battery, Software for Windows and USB Cable, padded case

Toll free in USA: 1-888-537-7363  
International: +1-518-608-6479

Fax: 1-309-422-4355  
www.lessemf.com